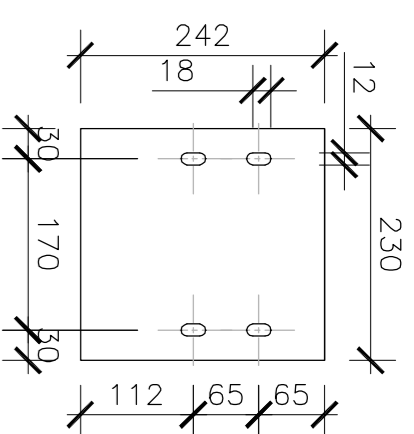


**PLEASE MARK
STEEL AS GROUND FLOOR
NORTH EAST POSTS**



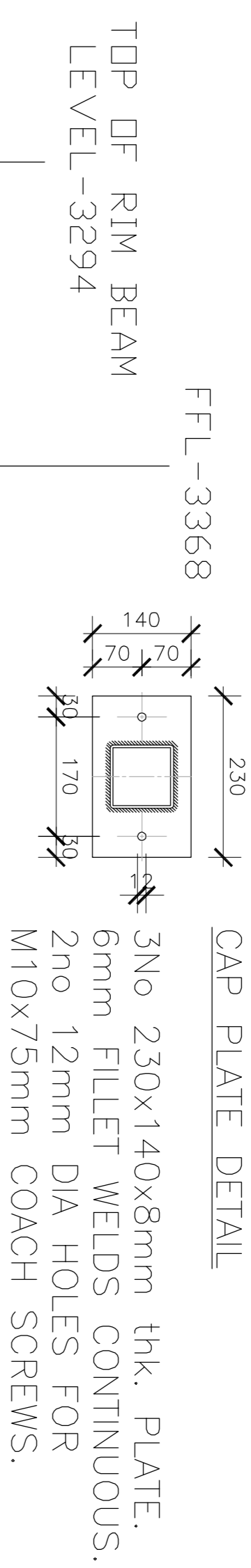
END PLATE DETAIL
3No 230x242mmx8mm thk. PLATE.
6mm FILLET WELDS CONTINUOUS.
4no 12mm DIA SLOTTED HOLES FOR
M10x75mm COACH SCREWS.

**ALL STEEL PLATES TO HAVE
6mm CONTINUOUS FILLET
WELDS, WHERE SHOWN**

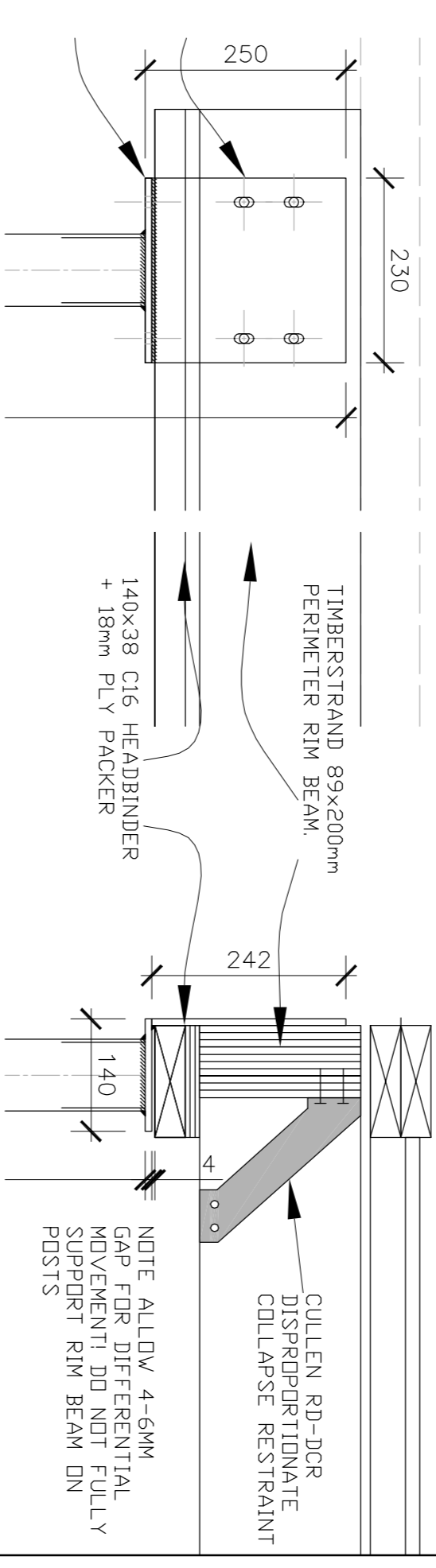
IF IN DOUBT ASK

3 NO 90X90X4 SHS COLUMN'S AS SHOWN

SCALE 1:7.5

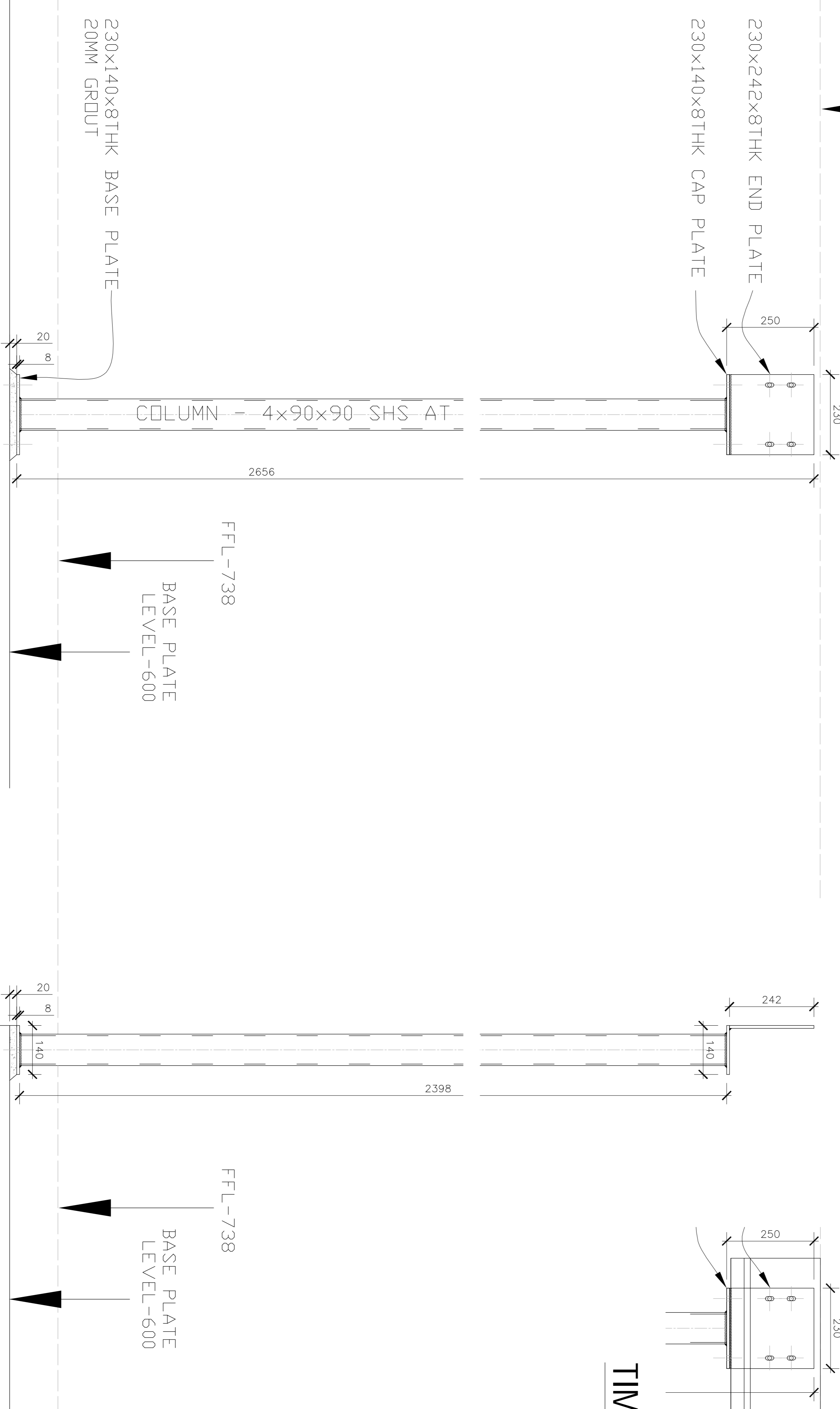


CAP PLATE DETAIL
3No 230x140x8mm thk. PLATE.
6mm FILLET WELDS CONTINUOUS.
2no 12mm DIA HOLES FOR
M10x75mm COACH SCREWS.



TIMBER CONNECTION DETAILS

SCALE 1:7.5



230x140x8THK BASE PLATE
20MM GRDUT

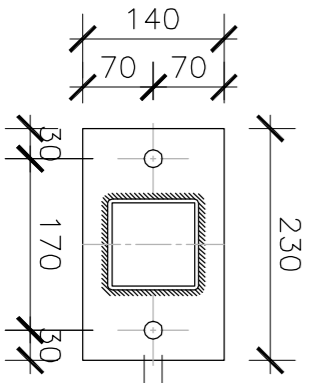
COLUMN - 4x90x90 SHS AT

FFL-738
BASE PLATE
LEVEL-600

FFL-738
BASE PLATE
LEVEL-600

PAINT SPEC TO BE:

- A) ZINC PHOSPHATE PRIMER 80 μM.
- OR
- B) 2 COATS WATER BASED ACRYLIC OR WATER BASED EPOXY ZINC PHOSPHATE PRIMER TOTAL 120 μM.



BASE PLATE DETAIL
3No 230x140x8mm thk. PLATE.
6mm FILLET WELDS CONTINUOUS.
2no 18mm DIA HOLES FOR M16
RESIN ANCHORS.

Revision	Date	Comments
A	8/10/08	OIA POST DIM INCLD
..
..
..
..
..
..
..
..
..

Submit (your) signed e-mail (no responsibility for building waste carried out before this box states for construction)

CONSTRUCTION

Client	..
Title	GROUND FLOOR STEEL FABRICATION DETAILS
Project	..
Scale	N.T.S. @A1
Date started	21/08/2008
Date printed	25/06/2009
Created by	PAUL NEWMAN
Drawn by	ANDY BEST
Drawing No.	**/ST/06
Rev.	A

**PLEASE MARK
STEEL AS GROUND FLOOR
1No FLAT 1 & 1No FLAT 2**

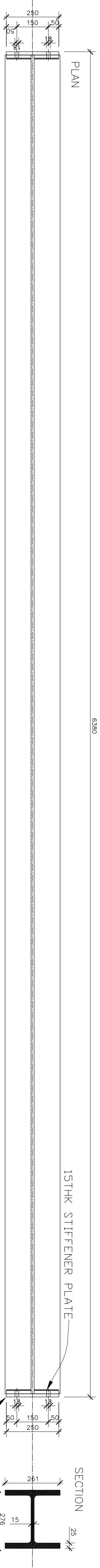
**PLEASE SUPPLY 24No M12
x 320mm LG NUT & BOLTS
+ 48No 50mmØ WASHERS**

**PLEASE SUPPLY 32No
M16 GRADE 8.8 BOLTS TO
ALL CONNECTIONS**

**ALL STEEL PLATES TO HAVE
6mm CONTINUOUS FILLET
WELDS, WHERE SHOWN**

**IF IN DOUBT ASK
ALL HOLES 18mm DIA
TO SUIT M16's**

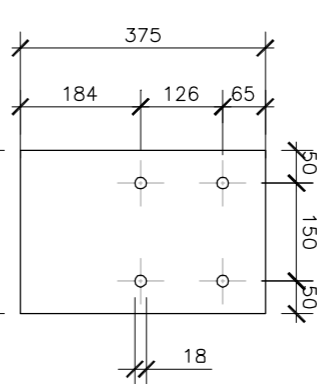
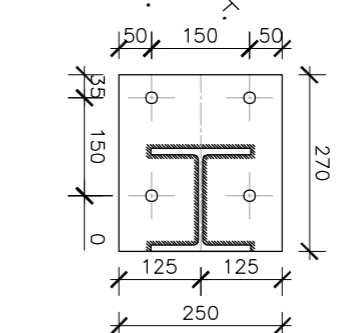
254x254x132 UC AT 6350



2 No GROUND FLOOR GOAL POSTS FRAMES

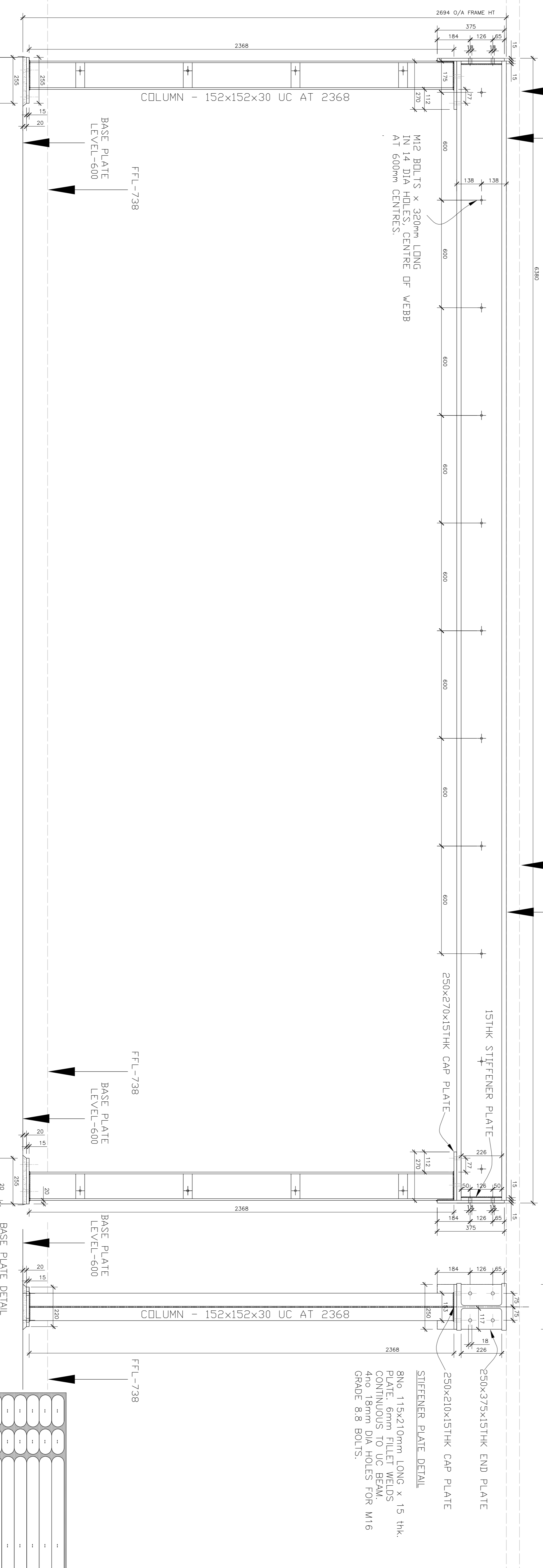
FFL-3368
TOP OF BEAM
LEVEL-3294

CAP PLATE DETAIL
4No 270x250mm LONG x 15 thk.
PLATE. 6mm FILLET WELDS
CONTINUOUS TO BEAM & PLATES.
4no 18mm DIA HOLES FOR M16
GRADE 8.8 BOLTS.



END PLATE DETAIL
4No 250x375mm LONG x 15 thk.
PLATE. 6mm FILLET WELDS
CONTINUOUS TO RHS.
4no 18mm DIA HOLES FOR M16
GRADE 8.8 BOLTS.

M12 BOLTS x 320mm LONG
IN 14 DIA HOLES CENTRE OF WEBB
AT 600mm



BASE PLATE DETAIL
4No 255x220mm LONG x 15
thk. PLATE. 6mm FILLET WELDS
CONTINUOUS.
4no 18mm DIA HOLES FOR M16
RESIN ANCHORS.

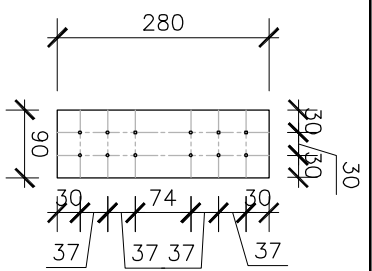
Client	**
Title	GROUND FLOOR STEEL FLATS 1 & 2
Project	...
Scale	N.T.S. @A1
Date started	21/08/2008
Date finished	25/06/2009
Drawn by	ANDY BEST
Checked by	PAUL NEWMAN
Order No.	**ST/01
Rev.	B

CONSTRUCTION

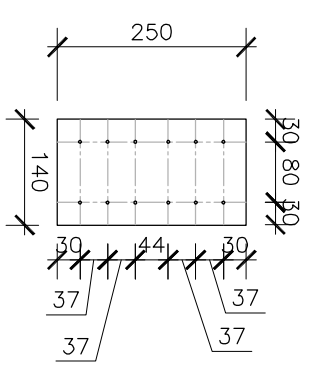
PAINT SPEC TO BE:

**A) ZINC PHOSPHATE PRIMER 80 µM.
OR**

B) 2 COATS WATER BASED ACRYLIC OR WATER BASED EPOXY ZINC PHOSPHATE PRIMER TOTAL 120 µM.

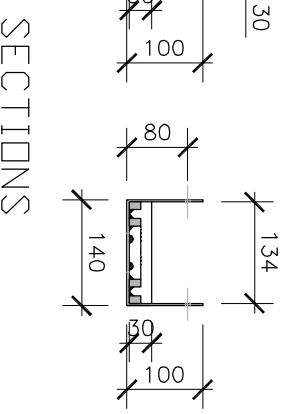
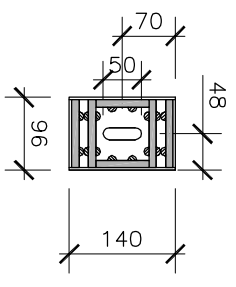


2No 80x280x10THK PLATES
4mm DIA HOLES FOR
3.1x50mm LG NAILS



1No 140x250x10THK PLATES
4mm DIA HOLES FOR
3.1x50mm LG NAILS

PLAN



SECTIONS

4No 3mm THK BASE POST PLATES
TACK WELDS TO PLATE PACKERS
10mm THK x 15mm PACKER INFILL
16mm DIA SLOTTED HOLE FOR M14 RESIN ANCHOR BOLT
+4No 4mm DIA HOLES FOR 32mm SQ TWIST NAILS

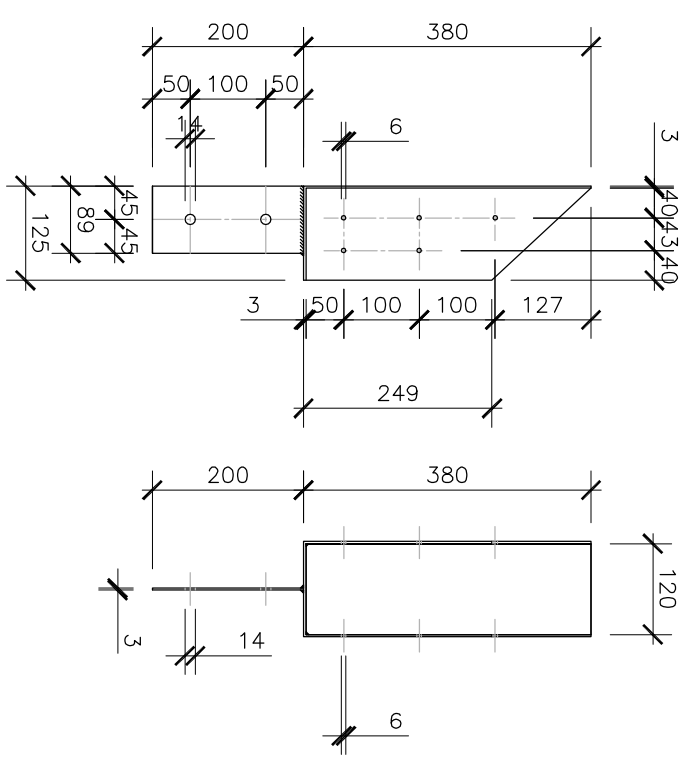
STEEL BASE PLATE

MARK WITH REF LETTER "AB"

PAINT SPEC TO BE:

- A) ZINC PHOSPHATE PRIMER 80 UM.
- OR
- B) 2 COATS WATER BASED ACRYLIC OR WATER BASED EPOXY ZINC PHOSPHATE PRIMER TOTAL 120 UM.

STEEL BEARING PLATES



4No SPECIAL HANGERS.
3mm THK PLATES
4mm FILET WELDS
14mm DIA HOLES FOR M12 BOLTS
& 6mm DIA HOLES FOR N10
WOOD SCREWS

GROUND FLOOR STEEL SPECIAL HANGERS

MARK WITH REF LETTER "U"

IF IN DOUBT ASK

TIMBER FRAME MOVEMENT ALLOWANCE
ARCHITECT / BUILDING DESIGNER / BRICKLAYER TO ADJUST BRICK COURSE TO PROVIDE ADEQUATE GAP BELOW SILLS OF TIMBER FRAME OPENINGS TO ALLOW FOR SETTLEMENT AND SHRINKAGE OF THE TIMBER FRAME ESTIMATED TO BE -

GROUND FLOOR 4mm
FIRST FLOOR 4mm
SECOND FLOOR 6mm
AT EAVES 16mm

ARCHITECT / BUILDING DESIGNER TO DETAIL ABUTMENTS AND OPENINGS TO ACCOMMODATE MOVEMENT (REFER TO TRADA FOR MORE INFORMATION AND DETAILS).

COMPARTMENT TIES TO DOUBLE SKIN WALLS

COMPARTMENT WALL TIES CULLEN 'STR' LIGHTWEIGHT STEEL STRAP (30mm x 2.5mm SECTION SIZE) x 250mm LG FIXED TO TOP RAIL OF WALL PANELS WITH MIN 4no 3.75mm dia x 50mm LG SQUARE TWIST NAILS (2no PER PANEL) AT 1200mm C/C. STRAPS TO HAVE 4mm dia HOLES (THESE ARE TO BE SPECIFIED EXPLICITLY ON ORDER) STRAPS TO BE FIXED IN PAIRS

OPENINGS

ALL OPENING DIMENSIONS SHOWN ARE THE STRUCTURAL OPENING (S/O) SIZE. THESE RODS ARE NORMALLY OBTAINED FROM WINDOW SILL OR OTHER SUPPLIER BY OTHERS. IT IS WORTH NOTING THAT A SILL ON EITHER SIDE AND OVER THE TOP OF THE WINDOW FRAME HAS BEEN ALLOWED FOR.

LEGAND

ALL EXTERNAL WALLS ARE 38x140mm O.S. EXTERNAL AND PARTY WALLS TO HAVE 95mm O.S.B (OR SIMILAR) NAILLED TO CAVITY SIDE AND COVERED WITH BREAKER MEMBRANE. PARTY AND INTERNAL WALLS ARE 38x89mm O.S.
LOAD BEARING TIMBER WALL :
NONLOADBEARING TIMBER WALL :
EXTERNAL MASONRY WALL :
STRUCTURAL SUPPORT BEAM :
(BY OTHERS)

FINISHES

FINISHES SHOWN ARE INDICATIVE ONLY AND ARE PROVIDED TO ESTABLISH WORKING ZONES TO PROGRESS THE DETAILING OF THE TIMBER FRAME ELEMENTS. ACTUAL FINISHES SPECIFICATION FOR THERMAL, PRE AND ACOUSTIC PERFORMANCE TO BE PROVIDED BY OTHERS OR AS AGREED - ANY DIMENSIONAL VARIATIONS HOWEVER MAY IMPACT ON THE TIMBER FRAME COMPONENTS RESULTING IN REDUCTIONS TO THESE DETAILS

MISCELLANEOUS

ALL DIMENSIONS ARE IN mm. DO NOT SCALE THIS DRAWING. CONTRACTOR TO CHECK ALL DIMENSIONS AND REPORT ALL ERRORS AND OMISSIONS TO THE ENGINEER.
THIS DRAWING IS TO BE READ IN CONJUNCTION WITH ALL OTHER STRUCTURAL, TIMBER DESIGN SERVICES, DRAWINGS AND DESIGN SPECIFICATION. ALL OTHER RELEVANT SERVICES, STRUCTURAL ENGINEERS DRAWINGS, ARCHITECTS / BUILDINGS DESIGNERS SPECIFICATION AND DRAWINGS AND MAILING SCHEDULE IN DESIGN SPECIFICATION.

ALL FININGS AND FITTINGS TO BE INSTALLED IN ACCORDANCE WITH MANUFACTURERS RECOMMENDATIONS.
ALL DIMENSIONS AND SETTING OUT TO BE CONFIRMED BY ARCHITECT / CLIENT.

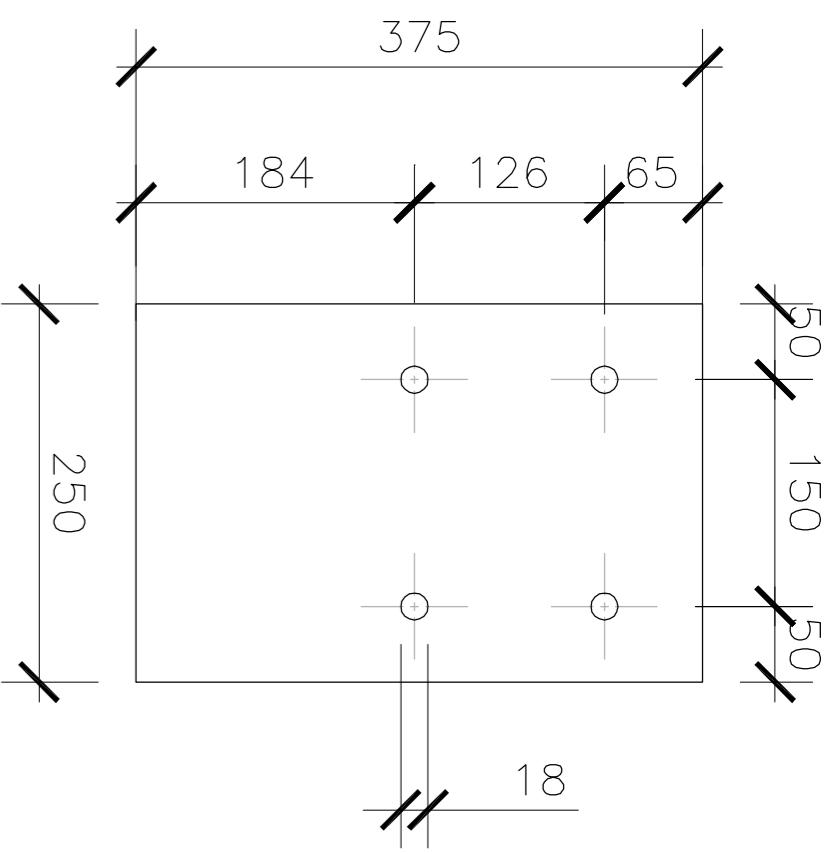
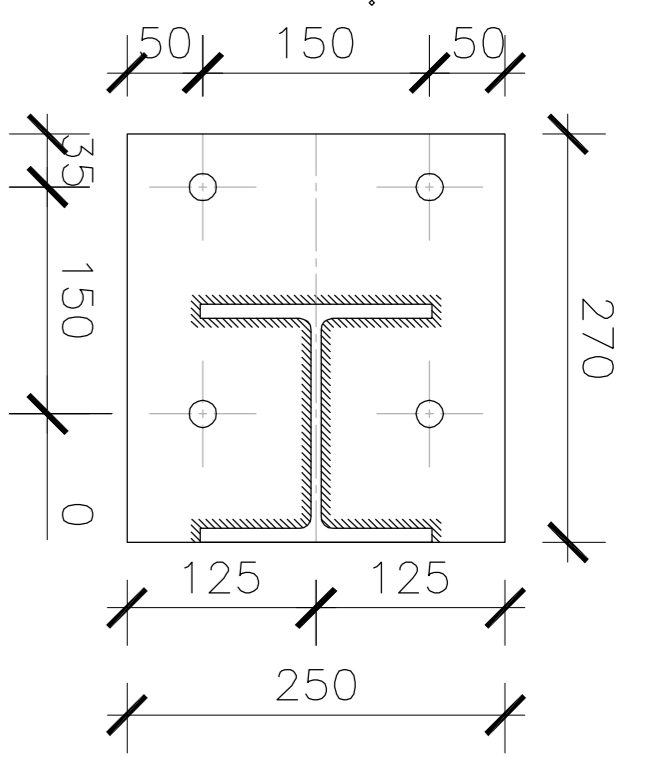
Client	..
Title	GROUND FLOOR STEEL POST PLATES
Project	...
Scale	1:10@A3
Date stored	21/08/2008
Date printed	25/06/2009
Drawn by	ANDY BEST
Checked by	PAUL NEWMAN
Opening No.	**/ST/05
Rev.	C

CONSTRUCTION

Revision	Date	Comments
C	6.10.08	ADDITIONAL BASE PLATE. NB DETAIL ADDED
B	3.3.08	ADDITIONAL HANGER DETAILS ADDED
B		FIRST ISSUE

CAP PLATE DETAIL

4No 270x250mm LONG x 15 thk. PLATE. 6mm FILLET WELDS CONTINUOUS TO BEAM & PLATES. 4no 18mm DIA HOLES FOR M16 GRADE 8.8 BOLTS.



END PLATE DETAIL

4No 250x375mm LONG x 15 thk. PLATE. 6mm FILLET WELDS CONTINUOUS TO RHS. 4no 18mm DIA HOLES FOR M16 GRADE 8.8 BOLTS.

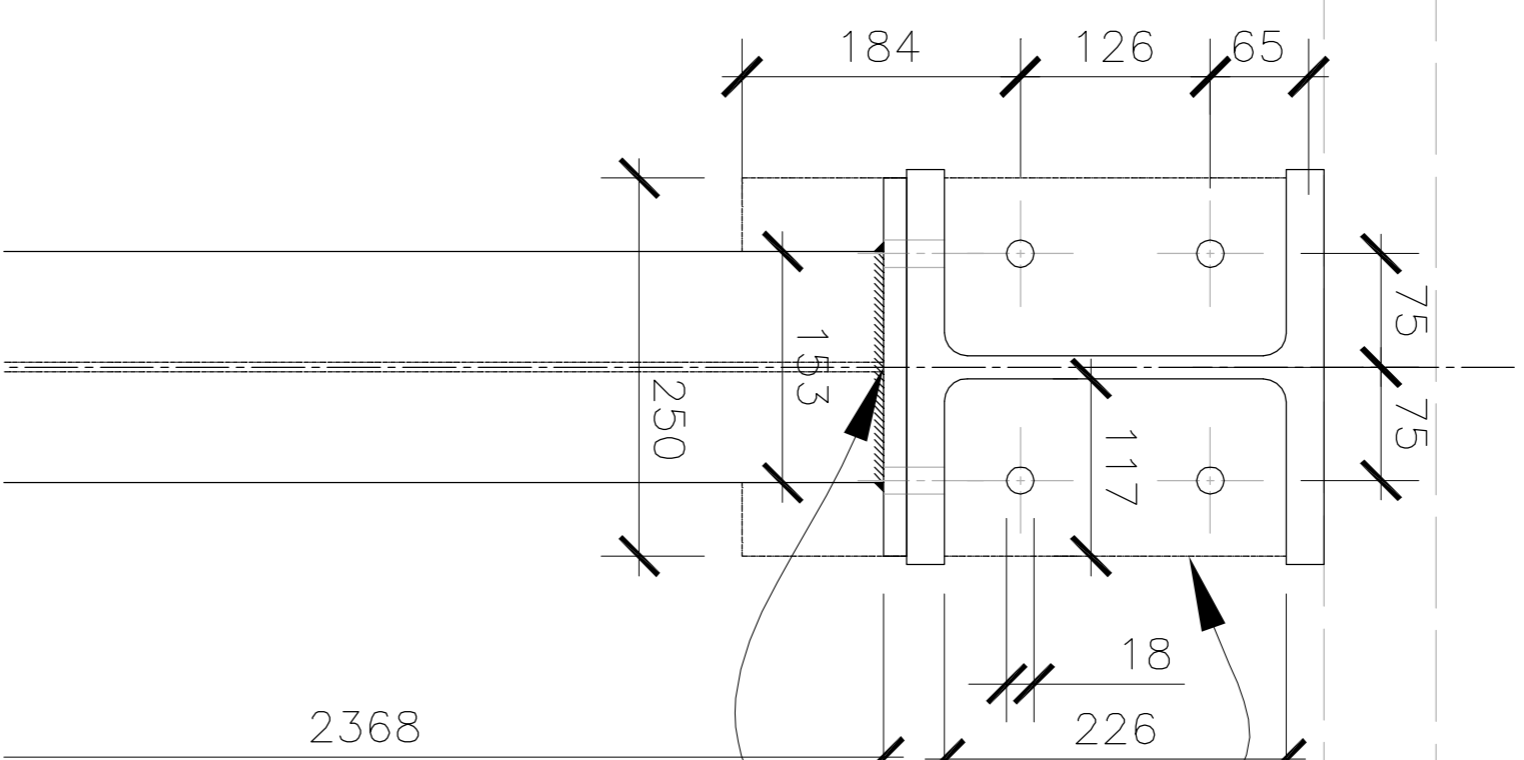
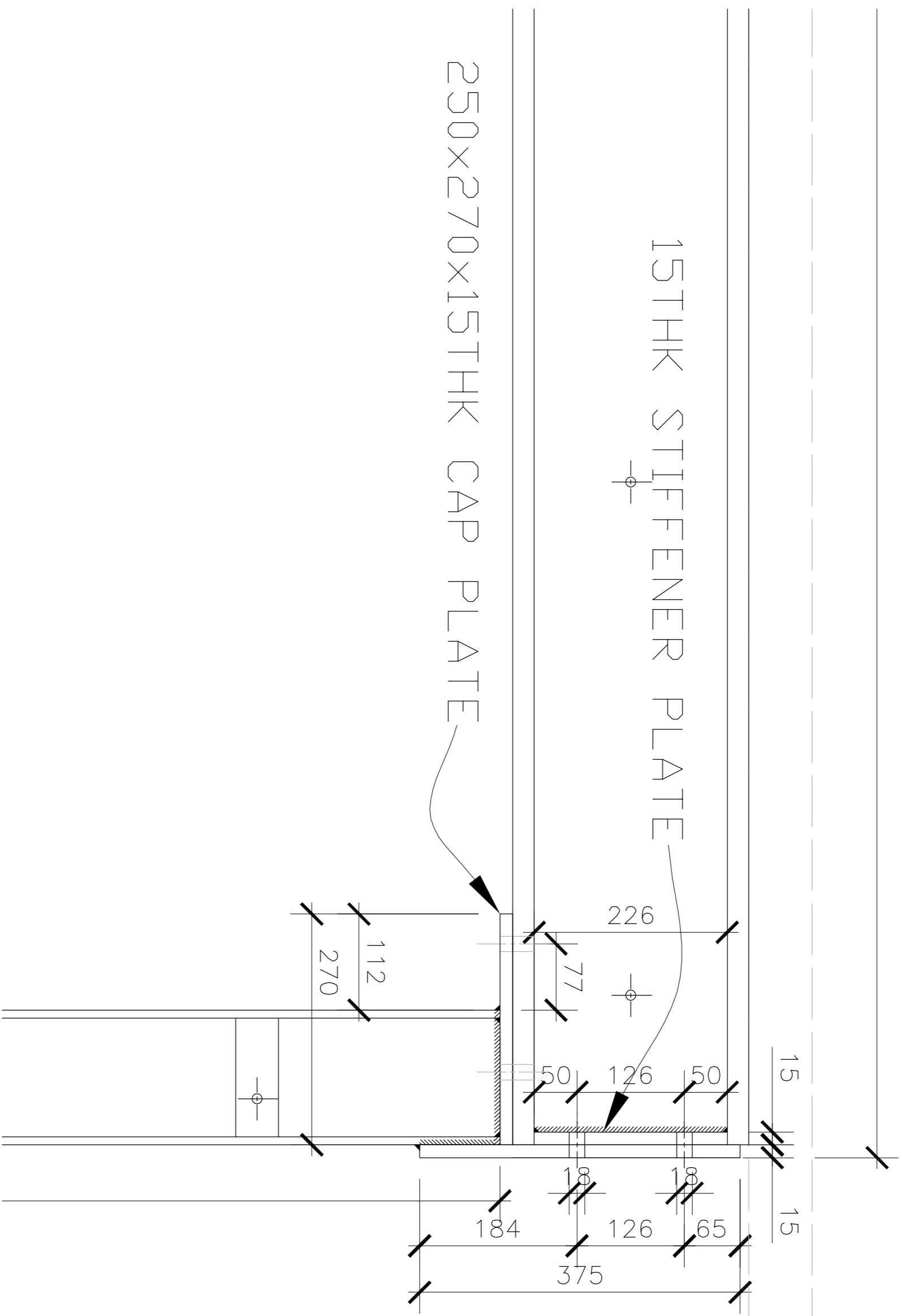
ALL HOLES 18mm DIA TO SUIT M16's

ALL STEEL PLATES TO HAVE 6mm CONTINUOUS FILLET WELDS, WHERE SHOWN

PLEASE MARK STEEL AS GROUND FLOOR 1No FLAT 1 & 1No FLAT 2

STIFFENER PLATE DETAIL

8No 115x210mm LONG x 15 thk. PLATE. 6mm FILLET WELDS CONTINUOUS TO UC BEAM. 4no 18mm DIA HOLES FOR M16 GRADE 8.8 BOLTS.



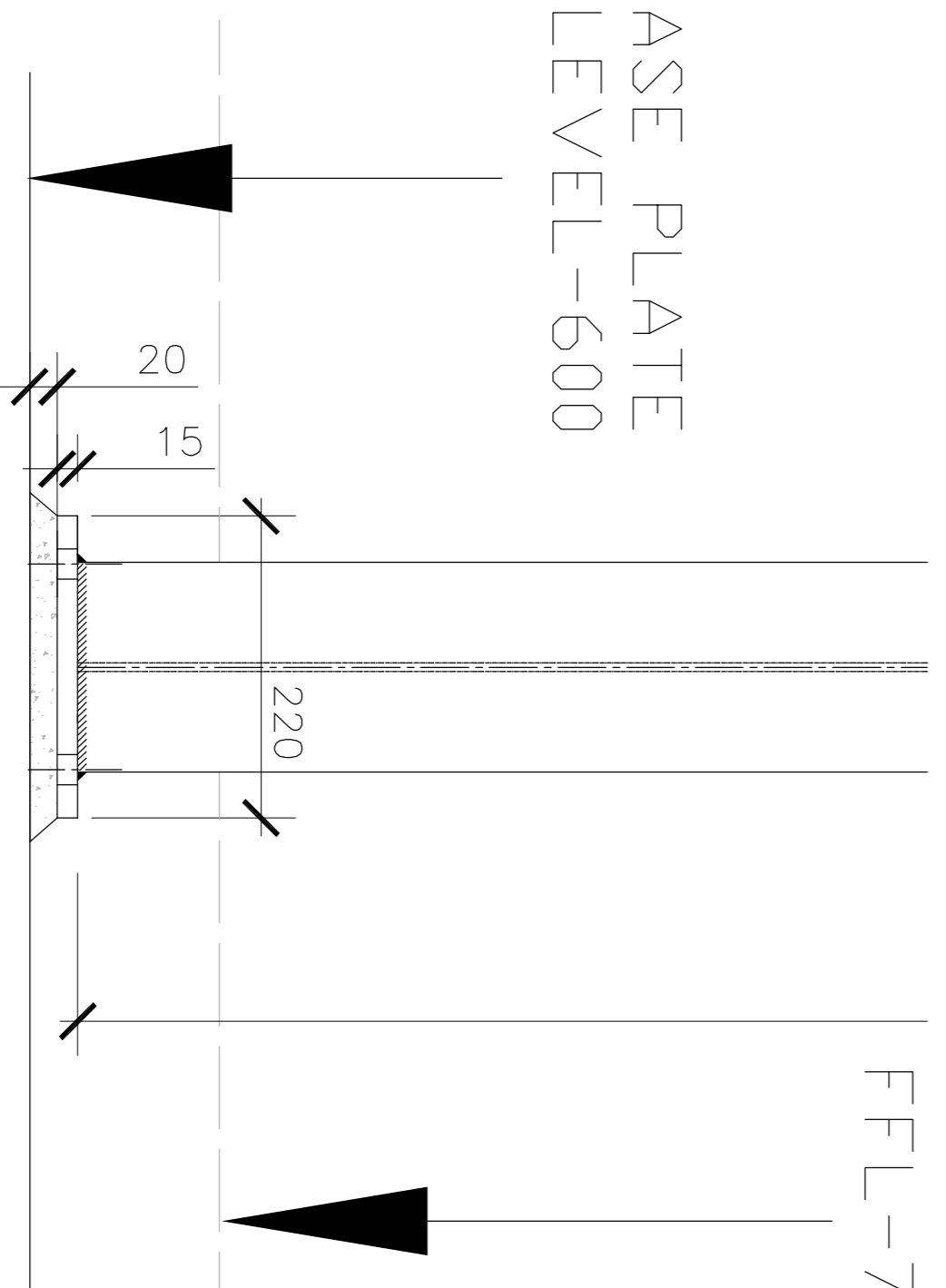
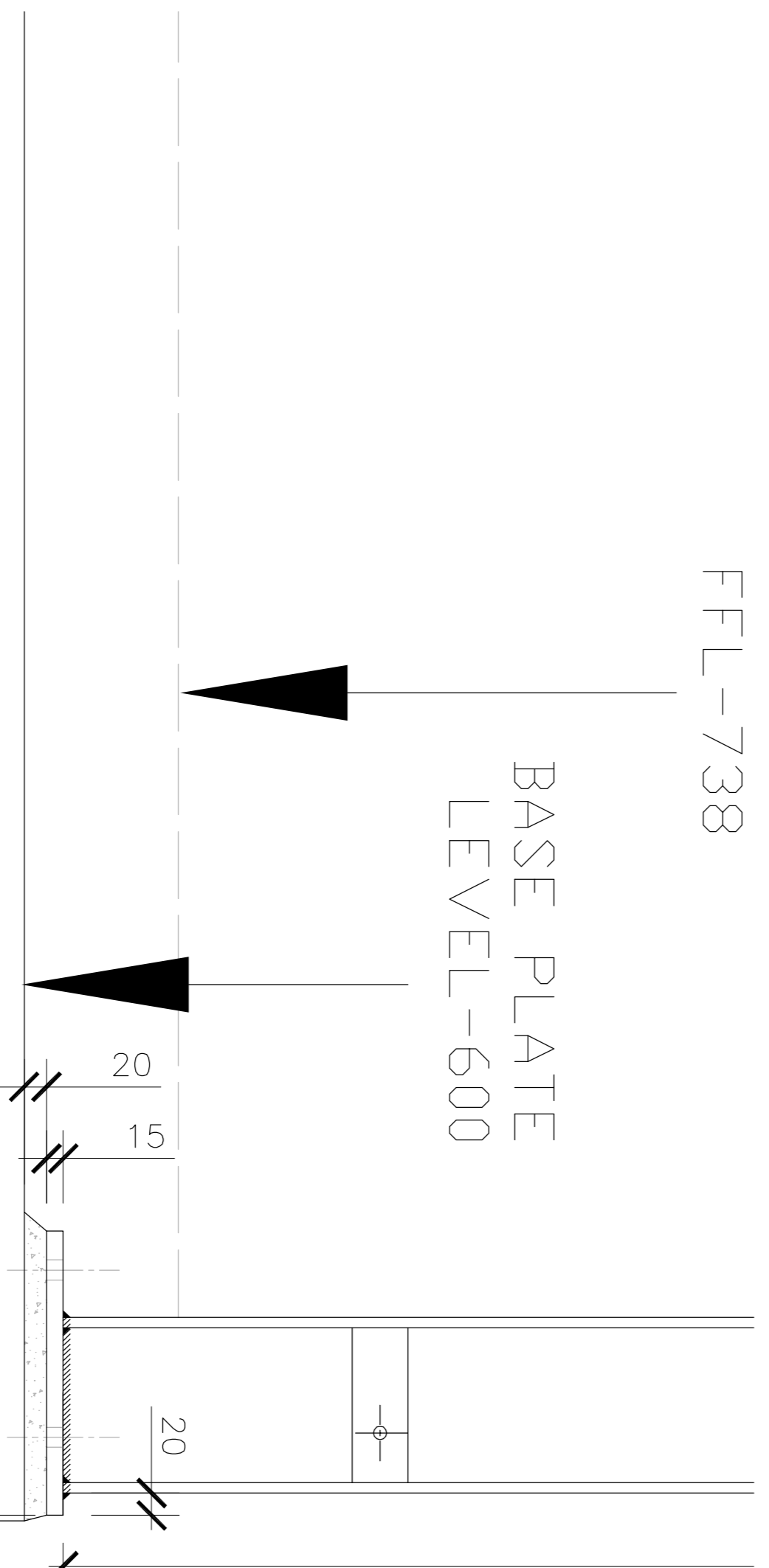
FFL-738
BASE PLATE LEVEL-600

BASE PLATE LEVEL-600

FFL-738

BASE PLATE DETAIL

4No 255x220mm LONG x 15 thk. PLATE. 6mm FILLET WELDS CONTINUOUS. 4no 18mm DIA HOLES FOR M16 RESIN ANCHORS.



PAINT SPEC TO BE:
A) ZINC PHOSPHATE PRIMER 80 uM.
OR
B) 2 COATS WATER BASED ACRYLIC OR WATER BASED EPOXY ZINC PHOSPHATE PRIMER TOTAL 120 uM.

Revision	Date	Comments
A	21.8.08	REVISED COLUMN DETAILS

Global Notes: Structural steelwork to be checked out before this box states (for construction)

CONSTRUCTION

Client	..
Title	GROUND FLOOR STEEL DETAILS.2
Project	..
Scale	N.T.S. @A1
Date issued	21/08/2008
Date printed	25/06/2009
Checked by	PAUL NEWMAN
Drawn by	ANDY BEST
Drawing No.	**/ST/03
Rev.	A