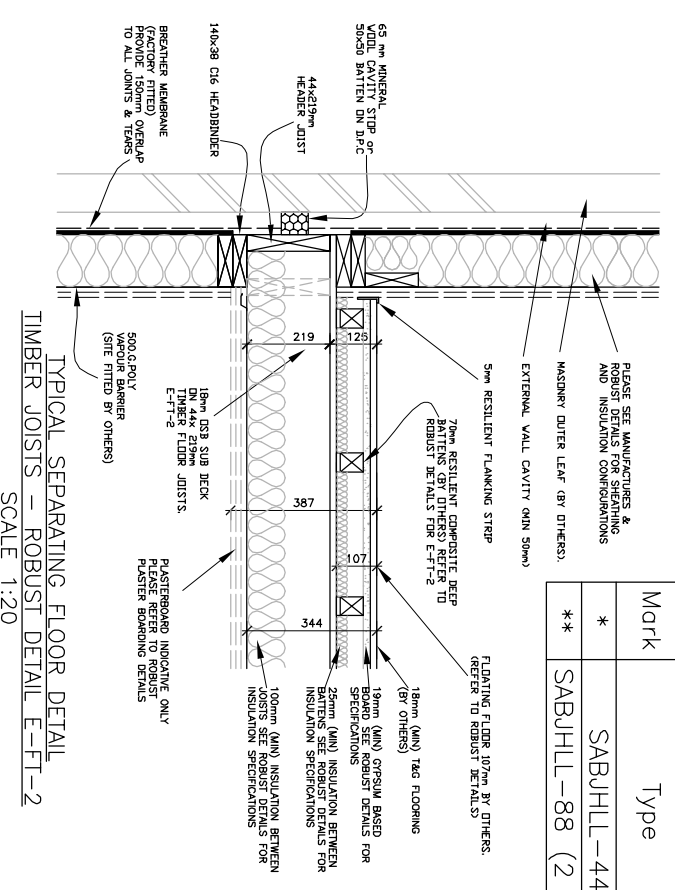


Hangers & Connectors					
Mark	Type	Nailing	Quantity	Notes	
*	SABJHLL-44	Supported	J.6/F.24	J.6/F.24	SABREFIX
**	SABJHLL-88 (2 PLY)	Carrying	J.6/F.24	J.6/F.24	SABERFIX



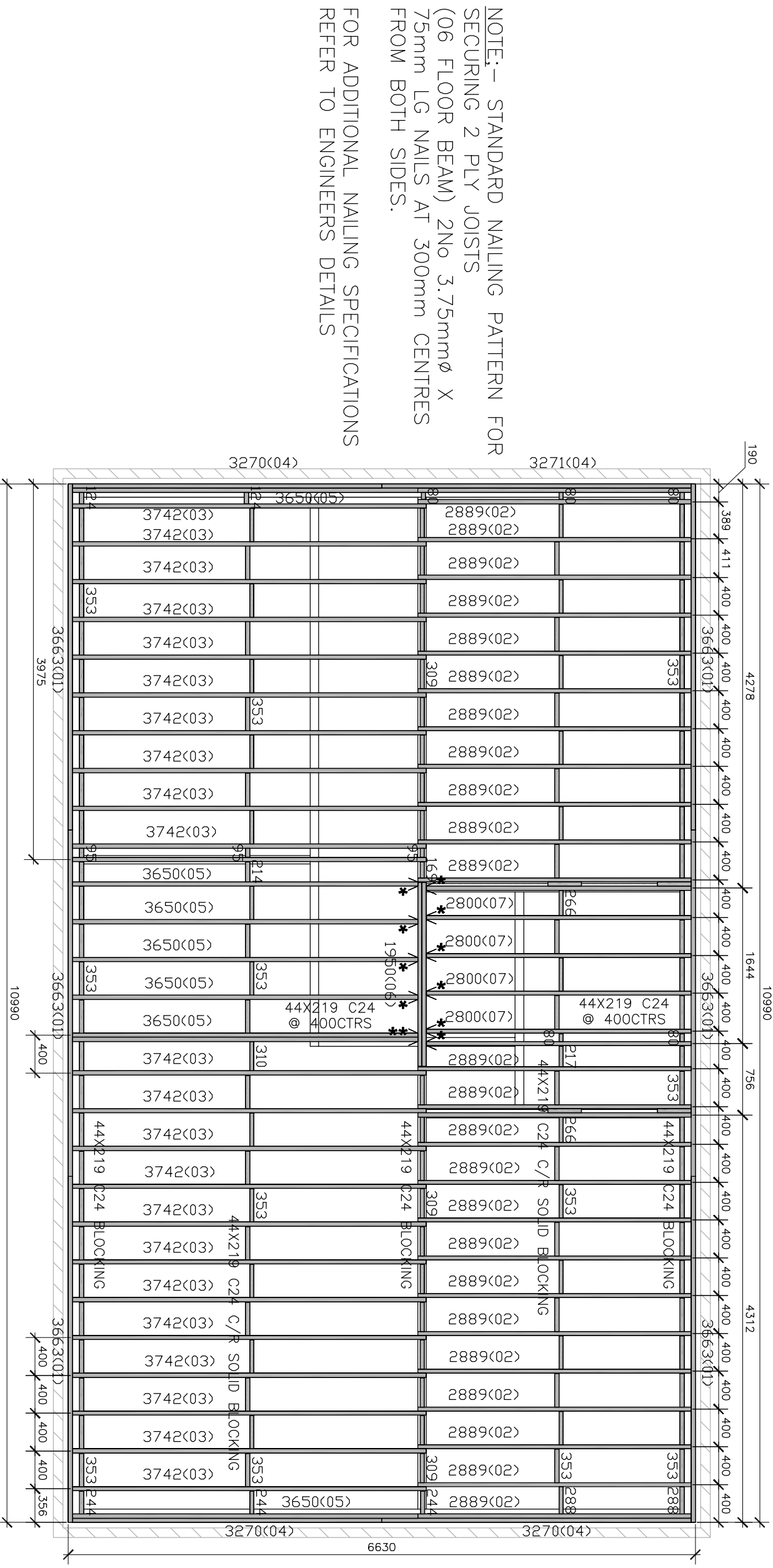
TYPICAL SEPARATING FLOOR DETAIL  
TIMBER JOISTS - ROBUST DETAIL E-FT-2  
SCALE 1:20

FLOOR DECK TOTAL  
44x219 C24 293914

2nd FLOOR DECK SETTING OUT PLAN

NOTE FOR SITE INSTALLATION REFER TO ROBUST DETAILS E-FT-2

Count	Style	Length/Area	Cut	Angle	Width	Depth	Quantity
(03)	44x219 C24	3742	90, 90		219	44	23
(01)	44x219 C24	3663	90, 90		219	44	6
(05)	44x219 C24	3650	90, 90		219	44	8
(04)	44x219 C24	3270	90, 90		219	44	4
(02)	44x219 C24	2888	90, 90		219	44	26
(07)	44x219 C24	2800	90, 90		219	44	6
(06)	44x219 C24	1950	90, 90		219	44	2
(10)	44x219 C24	353	90, 90		219	44	104
(11)	44x219 C24	309	90, 90		219	44	21
(13)	44x219 C24	288	90, 90		219	44	2
(19)	44x219 C24	266	90, 90		219	44	5
(12)	44x219 C24	244	90, 90		219	44	3
(21)	44x219 C24	217	90, 90		219	44	2
(17)	44x219 C24	213	90, 90		219	44	2
(20)	44x219 C24	169	90, 90		219	44	1
(15)	44x219 C24	124	90, 90		219	44	2
(18)	44x219 C24	95	90, 90		219	44	3
(14)	44x219 C24	80	90, 90		219	44	5



18mm DECKING

IF IN DOUBT ASK

**TIMBER FRAME MOVEMENT ALLOWANCE**  
ARCHITECT / BUILDING DESIGNER / BREKAKER TO ADJUST BRICK COURSEING TO PROVIDE ADEQUATE GAP BELOW SILLS OF TIMBER FRAME OPENINGS TO ALLOW FOR SETTLEMENT AND SHRINKAGE OF THE TIMBER FRAME ESTIMATED TO BE -

**GROUND FLOOR**  
4mm  
FIRST FLOOR  
18mm  
SETBACK  
18mm

ARCHITECT / BUILDING DESIGNER TO DETAIL ABUTMENTS AND OPENINGS TO ACCOMMODATE MOVEMENT (REFER TO TRADA FOR MORE INFORMATION AND DETAILS).

COMPARTMENT TIES TO DOUBLE SKIN WALLS

COMPARTMENT WALL TIES CULLEN 'STR' LIGHTWEIGHT STEEL STRAP (30mm x 2.5mm SECTION SIZE) x 250mm LG FIXED TO TOP RAIL OF WALL PANELS WITH MIN 4No 3.75mm dia x 30mm LG SQUARE THIST NAILS (2No PER PANEL) AT 1200mm C/C. STRAPS TO HAVE 4mm dia HOLES (THESE ARE TO BE SPECIFIED EXPLICITLY ON ORDER) STRAPS TO BE FIXED IN PAIRS

OPENINGS

ALL OPENING DIMENSIONS SHOWN ARE THE STRUCTURAL OPENING (S/O) SIZE. THESE PROFILES ARE NORMALLY ORDERED FROM WINDOW SILL OR OTHER SUPPLIER BY OTHERS. TIES WINDOW FRAME SHALL BE EITHER SIDE AND OTHER THE TOP OF THE WINDOW FRAME HAS BEEN ALLOWED FOR.

LEGAND

ALL EXTERNAL WALLS ARE 38x40mm O.S. EXTERNAL AND PARTY WALLS TO HAVE 95mm O.S.B (OR SIMILAR) NAILED TO CANTY SIDE AND COVERED WITH BREAKER MEMBRANE, PARTY AND INTERNAL WALLS ARE 38x80mm O.S.

LOAD BEARING TIMBER WALL : (BY OTHERS)

NONLOADBEARING TIMBER WALL : (BY OTHERS)

EXTERNAL MASONRY WALL : (BY OTHERS)

STRUCTURAL SUPPORT BEAM : (BY OTHERS)

FINISHES

FINISHES SHOWN ARE INDICATIVE ONLY AND ARE PROVIDED TO ESTABLISH WORKING ZONES TO PROGRESS THE DETAILING OF THE TIMBER FRAME ELEMENTS. ACTUAL FINISHES SPECIFICATION FOR THERMAL, PRE AND ACOUSTIC PERFORMANCE TO BE PROVIDED BY OTHERS OR AS AGREED - ANY DIMENSIONAL VARIATIONS HOWEVER MAY IMPACT ON THE TIMBER FRAME COMPONENTS RESULTING IN REDUCTIONS TO THESE DETAILS

MISCELLANEOUS

ALL DIMENSIONS ARE IN mm. DO NOT SCALE THIS DRAWING. CONTRACTOR TO CHECK ALL DIMENSIONS AND REPORT ALL ERRORS AND OMISSIONS TO THE ENGINEER.

THIS DRAWING IS TO BE READ IN CONJUNCTION WITH ALL OTHER STRUCTURAL TIMBER DESIGN SERVICES DRAWINGS AND DESIGN SPECIFICATION. ALL OTHER RELEVANT SERVICES, STRUCTURAL ENGINEERS DRAWINGS, ARCHITECTS / BUILDINGS DESIGNERS SPECIFICATION AND DRAWINGS AND NAILING SCHEDULE IN DESIGN SPECIFICATION.

ALL FRAMES AND FITTINGS TO BE INSTALLED IN ACCORDANCE WITH MANUFACTURERS RECOMMENDATIONS.

ALL DIMENSIONS AND SETTING OUT TO BE CONFIRMED BY ARCHITECT / CLIENT.

Structural Timber Design Solutions LLP  
21 Ladbroke Grove, London W8 3DF, UK  
Tel: 0177 9088848  
Mobiles: 07831 817906 & 07831 727819

Revision	Date	Comments
1	14/03/2009	Initial Issue (Single sheet) for building work carried out before this box states for construction)

**CONSTRUCTION**

Client: \*\*\*\*-TIMBER FRAME

Title: 2nd FLOOR DECK SETTING OUT PLAN

Project: \*\*\*\*

Scale: 1:50 @A3  
Date issued: 14/03/2009  
Date printed: 23/06/2009

Checked by: PAUL NEWMAN  
Drawn by: ANDY BEST  
Drawing No: \*\*/D/02